

# MCM

# 4G

# MIDDLE SCHOOL MINISTRY

**4G Student Ministry**  
LifeSpring Church  
13904 South 36th Street

**Middle School Pastor**  
Ryan Jantz





## Ryan Jantz

Middle School Pastor  
402-707-7302  
rjantz@lifespringchurch.com



 /ryanjantz

 @ryanjantz

 @ryanjantz

Hi! My name is Ryan and I am the middle school pastor here at LifeSpring. I joined the staff here in April 2010. Here's a little bit about me... I was born and raised in Derby, Kansas. My wife Ashley and I first met in our youth group and got married in 2004. We have 5 beautiful children, Aubrey, Caleb, Grace, Emma, and Lillian so our home is always exciting! I created the website [breakfreeyouthministry.com](http://breakfreeyouthministry.com) as a resource for youth pastors and am passionate about seeing students become set free to be Christ followers. I am a big Colorado Avalanche fan and enjoy playing guitar, media and web design, frisbee golf, gobstoppers, Haruki Murakami novels, Dr. Pepper, and a nice green lawn.

If you have any questions or would like to know more about Middle School Ministry please contact me!

**Address —**  
LifeSpring Church  
13904 South 36th Street  
Bellevue, NE 68123

**Telephone —**  
402-292-4546

**Email —**  
rjantz@lifespringchurch.com

**Website —**  
[www.lifespringchurch.com/students/middle-school](http://www.lifespringchurch.com/students/middle-school)  
[www.facebook.com/4GStudentMinistry](http://www.facebook.com/4GStudentMinistry)

# M M

## MIDDLE SCHOOL MINISTRY



### GREETINGS PARENTS!

One of the most difficult hurdles to overcome is the transition from grade school to middle school. For many students, they never get to experience all that our student ministry offers because they never get plugged in and stick to it for more than a few weeks. We want you to know that we're very concerned about getting your son or daughter involved in our ministry and want to help in whatever way we can. When talking to new students about the transition into our ministry we use these five key words.

**Faith:** Our primary goal is to help your child mature in his or her faith.

**Finish:** We want to see students finish their teenage years strong in their faith.

**Fear:** We want students to know that these feelings are natural and real and our staff and student leaders want to

do everything we can to help make the transition comfortable and less scary.

**Friends:** Our ministry is a place where students can develop friendships with other students who are pursuing a godly life.

**Fun:** Our student ministry is fun. We want students to have a good time!

While we have a large amount of students actively involved in our ministry, we have many ways for it to feel small. It's our goal for every student to feel connected to other students in our ministry and known by a caring adult who can help mentor them. We look forward to getting to know you and your family.

**Ryan Jantz**  
Middle School Pastor  
LifeSpring Church

# WELCOME TO MIDDLE SCHOOL MINISTRY

It's the perfect time jump in!



We exist to take the Gospel to students  
Gather them in worship  
Grow them to be like Jesus  
and Give them fully to the cause of Christ.



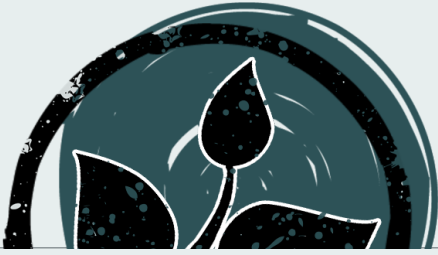
## Gospel

We want every student to hear the gospel and respond to the gospel. So through our events, worship times, and our conversations, we are always sharing the gospel and inviting students to respond to Jesus. This is the most important thing in our ministry!

## Gather

We want every student to gather for worship and to gather for fun. Our main time to gather is Wednesday night for Middle School Plunge. Committing to gathering for our main worship on Sunday morning every week is every student's next step after making Jesus their Lord.





## Grow

We want every student to grow in their walk with Christ by being a part of a weekly LifeGroup at Middle School Plunge and by developing spiritual habits in their life. Student LifeGroups is one of the places where true discipleship and lasting transformation takes place.



## Give

We want every student supporting and blessing the church as well as reaching and ministering to our community as they fully give themselves away for the Christ.

# OUR

# DISCIPLESHIP

# JOURNEY

FROM OUR  
GRADUATES

“I WAS SURROUNDED BY SEVERAL  
OTHER YOUTH FOLLOWERS OF CHRIST  
AND WAS ABLE TO KEEP GROWING IN  
MY WALK WITH THE LORD ”

BECKY BAGWELL

“I WAS ACCEPTED, ENCOURAGED,  
AND CHALLENGED THROUGH THIS MINISTRY  
AND AM SO GLAD I WAS ABLE  
TO BE A PART OF IT.”

JULIA KING

“4G STUDENT MINISTRY KEPT ME  
CONSTANTLY INVOLVED WITH MY CHURCH,  
COMMUNITY, AND RELATIONSHIP WITH CHRIST”

JOEL WALLACE

“WITHOUT THIS YOUTH MINISTRY  
I WOULDN'T BE THE  
MAN OF GOD I AM TODAY.  
THEIR MINISTRY CHANGED MY LIFE.”

BRANDEN SAHS

”





## YEARLY CALENDAR

Event	Date	Time	Location
Pursuit (A Middle School Getaway)	5/13-15/16	6:00pm	Gene Eppley Camp
Summer Kick-off Party	5/25/16	6:30-8:00pm	Papio Fun Park
Mid-Week Summer Gathering (Wed thru Aug 10)	6/1/16	6:30-8:00pm	LifeSpring Chapel
Summer Fun Night - Pizza and Pool Party	6/26/16	6:00-8:00pm	Harris House
Middle School Serve	6/27-7/1/16	8:30am-noon	LifeSpring
MSM Zootopia Movie Night	7/10/16	6:00-8:00pm	LifeSpring Chapel
Super Summer (Middle School Week)	7/18-22/16	8:00am	Salina, KS
Student Baptism & Membership Class	7/31/16	9:30am	Student Pastor Office
End of Summer Party	8/10/16	6:30-8:30pm	Defy Gravity
Chris Lake Baptism	8/14/16	4:00-5:00pm	Chris Lake
Church Picnic	8/28/16	4:00pm	Gene Eppley Camp
MSM Sunday Study (Every Sunday morning)	8/21/16	9:30 & 11am	Student Pastor Office
Middle School Plunge Kickoff (Every Wednesday)	8/31/16	6:30-7:45pm	LifeSpring Chapel
MSM Sunday Night Live	9/18/16	6:00-7:30pm	TBA
See You at the Pole	9/28/16	7:00am	School Flag Poles
Fields of Faith	10/12/16	7:00-8:30pm	Bellevue East
MSM Sunday Night Live	10/16/16	6:00-7:30pm	TBA
MSM Fall Retreat	10/21-23/16	4:30pm	TBA
MSM Sunday Night Live	11/20/16	6:30-8:00pm	TBA
MSM Christmas Party	12/7/16	6:30-7:45pm	LifeSpring Chapel
Middle School Plunge begins again	1/4/17	6:30-7:45pm	LifeSpring Chapel
MSM Sunday Night Live	1/15/17	6:00-7:30pm	TBA
Student Baptism & Membership Class	2/12/17	9:30am	Student Pastor Office
MSM Sunday Night Live	2/19/17	6:00-7:30pm	TBA
MSM Sunday Night Live	3/19/17	6:00-7:30pm	TBA
Ignite Conference	3/17-18/17	4:00pm	Des Moines, IA
4G Dodgeball Tournament	4/17/17	6:00-7:30pm	LifeSpring
Last Week of Middle School Plunge	4/26/17	6:30-7:45pm	LifeSpring Chapel

This schedule is subject to change and updating so follow us on Facebook and check our website regularly for the most up to date information.



# PRIMARY MINISTRIES

Events and activities are great, but lasting spiritual transformation is more of a marathon than a sprint. Our weekly ministry plan is the foundation upon which the rest of the middle school ministry is built. Meeting and sharing life week in and week out, praying for one another, encouraging one another, studying God's Word together and worshiping together are crucial to living out the Christian life. The national statistics say that more than 70% of church-going Christian teenagers completely reject their faith after graduating from high school. This trend will change only if students and their families place a high priority on their own spiritual growth by actively participating in their local church on a consistent weekly basis. The principle of "you get what you put in to it" is definitely true when it comes to the church community.



## MIDDLE SCHOOL PLUNGE

# MIDDLE SCHOOL PLUNGE

Wednesday nights

During the school year

6:30 - 7:45pm

LifeSpring Chapel

Middle School Plunge is where our MSM lifegroups take place. Student lifegroups are where true discipleship and lasting transformation takes place within 4G Student Ministry. We believe that the truths of Scripture were meant to be communicated in the context of relationships.

Middle School Plunge is designed for students to have fun together, study God's word together, and pray together. Plunge meets on Wednesday nights in the chapel from 6:30 to 7:45pm and basically runs during the school year with a few exceptions during the holidays. Each group consists of 3-8 middle school students and one high school or college leader. All students are assigned to gender appropriate groups with no mixed gender groups.

Every week at Plunge we play crazy games, watch funny videos, learn from

relevant teaching, and connect through group discussion, multi-media, big group activities, small group ice breakers, and other elements make this a very dynamic and fun experience.

### Personal Note from Pastor Ryan:

Generally speaking, I see consistent spiritual growth taking place in every student that makes their lifegroup a priority and I see little or no significant spiritual growth in those students that do not make a lifegroup a priority. Participating in Middle School Plunge is essential in a student's spiritual growth.





## SUNDAY MORNING STUDY



### Sundays

9:30 & 11:00am

Student ministry  
office

Every Sunday morning we worship together as one church in our main worship gathering at 9:30 and at 11:00am.

We ask all students who come for only one hour to join in our main worship. For middle school students that are on campus during both hours, we offer a Sunday Morning Study during both the 9:30 and 11:00am hours.

This study meets in the student ministry office and offers a chance for students to dive a little deeper into scripture with each other and a qualified adult leader.



# SUNDAY NIGHT LIVE

Monthly

On the third Sunday

6:00 - 7:30pm

Once a month we gather on Sunday night to simply have fun in a way that is safe and gives students a great opportunity to invite their friends and make new connections. Monthly events will include things like movie nights, bowling, park nights, dodgeball, house parties, etc. Like our Facebook page to keep up with our monthly schedule of events.

There's always something exciting just around the corner!

These events are designed to augment the regular programs. The goal is to create unique experiences where students can encounter the message of Jesus Christ in special and profound ways. Students can hear the voice of God and connect with Him when they separate from their regular routine, leave their

# MSM SPECIAL EVENTS

# SUPER SUN

JULY  
SALINA, KS



cell phone behind, and focus solely on Jesus. Pulling away from “normal” and connecting with God is a great thing for our spiritual lives! Along with these events, you’ll see others throughout the year such as summer fun nights, FCA Fields of Faith, See You At The Pole, service projects, Papio Fun Park, and nerf night.





# EXPECTATIONS OF STUDENTS



The bulk of the activities that take place at MSM are devoted to the student's spiritual growth through teaching from the Word of God, fun and fellowship, and worship. Because this is the focus, there are several expectations that go with our normal activities and programs:

//To listen and obey any instruction from any adult leader.

//To listen and not talk when any leader or student is attempting to communicate while the group is in session.

//To not swear or use any sort of profanity.

//To not show any sort of public display of affection (P.D.A.)

//To wear modest and appropriate clothing.

Appropriate clothing is defined as clothing that covers your bust, belly, back, and shoulders. Appropriate shorts are mid-thigh and skirts are longer than mid-thigh.

//To not smoke, drink any alcoholic beverage, chew tobacco, use or possess any illegal drugs, pornography, fireworks, weapons, or knives, etc.

//To respect God, each other, and each others' things (no name calling or bullying).

//Respect the church facility and equipment.

The Student Ministry office hours are generally Monday through Friday from 8:30 AM to 4:30 PM. Online communication (email, Facebook, church website) are the primary ways that we communicate information out to students and parents.

It is recommended that you join our MSM email list at <http://eepurl.com/b4ipy5>, check our website regularly, and join 4G Student Ministry Facebook page to stay in the loop on all that is going in the 4G Student Ministry. You may also join our text list for a weekly 4G text update by texting @4gst to 81010.

Pastor Ryan is available to meet with students and families individually. Communication with them about such needs is welcome and helpful.

CONNECT  
WITH  
PASTOR  
RYAN



# CORRECTING INNAPPROPRIATE BEHAVIOR

We are dealing with sinful human beings and as such we will run into behavior that does not comply with the standards we have set forth. Our goal is not to force them into compliance but to give them the opportunity to make the right decision and change their behavior. Every single issue is an opportunity to mold their character and attitude. Therefore we will always treat each student with respect no matter what the issue. We will make every effort to refrain from embarrassing a student publicly. We want to train the student to make the proper decision on their own because it is the right thing to do. Obviously each situation can vary but generally our procedure for correcting inappropriate behavior will be as follows.

### ***Student has violated a standard***

Step 1 – Lovingly and respectfully remind the student of the standard and that we expect them to comply. We now leave them alone and let them choose how they will respond. We give the student space and opportunity to make the decision themselves.

### ***Student has again violated the standard***

Step 2 – Repeat step 1 but now make it clear the consequences of violating the standard. Remain positive, respectful, and loving. Give them room, time, and opportunity to choose appropriately.

### ***Student has again violated the standard***

Step 3 – We will lovingly enforce the consequences. We will then remind them of the standard and what is expected of them. We will then give them room, time, and opportunity to change their behavior.



# ADULT & STUDENT INTERACTION

All adult workers must fill out the Kid's First form for our church and are background checked before they serve in the student ministry.

The 4G Student Ministry policy on adult and student interactions is established to set a standard of behavior as it pertains to interaction between students and adult leaders. Our goal is to guard students and adult leaders from inappropriate behavior and accusation or appearance of inappropriate behavior. Following this policy should ensure the safety of all.

There are two basic statements to summarize this policy; never be alone with a student and keep a "many-to-one" ratio. The following will outline how these two statements are applied. This is not an exhaustive list and will not cover every known situation. Using good common sense and this guideline should provide security for most conditions we encounter.

Adult leaders will guard against inappropriate behavior and accusations of inappropriate behavior by never being alone with a student. We define "alone" as in a closed, private space with no other person present. Adults will stay near other people when dealing with a student; an adult leader will not go with a student in a closed office together, or a basement, or room, etc. Sometimes a situation puts an adult worker in a room with a student. In this situation, the adult worker will keep the door open and position himself or herself near the door so that people can see him or her, and the adult will leave the room as soon as possible. Adult workers will avoid driving or sitting in a vehicle alone with a student that is not his or her own child.

Adult leaders will also guard against inappropriate behavior and accusations of inappropriate behavior by keeping a "many-to-one" ratio. By this we mean that we will always have another adult or student present in any situation. It is appropriate for an adult leader and a class of five students. It is also fitting for two adults to be in a room with one student.



Additional guidelines are given to student ministry trips and especially overnight stays.

1. At least two people in a sleeping room must be 19 or older.
2. Adult leaders will not sleep in the same bed as a student not related to them.
3. Adult leaders will not enter the room of members of the opposite sex.
4. Adult leaders will avoid being alone in a room with a student.

## Special Circumstances

From time to time a student will share something concerning abuse (physical and/or sexual). It is important to handle these issues appropriately because of the spiritual, emotional, physical, and legal implications. We never promise a student that we will keep something in confidence until we know what it is. We are required by law to report anything resembling physical or sexual abuse involving a minor. Pastor Ryan along with the parents will always be involved in the situation as soon as reasonably possible. We will always remain calm and supportive of the student and their families through any of the above situations. Students dealing with these issues desperately need to experience love, encouragement, stability, and safety. All issues will be kept as confidential as possible.



MIDDLE SCHOOL MINISTRY

LIFESPRIING  
CHURCH



If you have any questions or would like to know more information about 4G Middle School Ministry please contact us at anytime.

Pastor Ryan Jantz  
rjantz@lifespringchurch.com  
402-707-7302

[lifespringchurch.com](http://lifespringchurch.com)  
[fb.com/4gstudentministry](https://fb.com/4gstudentministry)